



Jessica Jackson Hutchins, "Too Much for us". Direct copperplate gravure etching with sugar lift aquatint and drypoint. Gampi chine-collé on Somerset 300g cotton rag. Image size: 18 x 17.25 in. Paper size: 23.5 x 22 in. Edition of 8. 2024. \$1000

STATEMENT FROM THE ARTIST: I came into the studio passionate about etching but fairly inexperienced. With Paul's guidance I jumped in, using all kinds of traditional techniques, and allowing the processes and the surprises on the plate to lead the way. I worked on many plates at once, each time a visual or technical problem was solved another would emerge until the plate resolved in an image that felt tender, beautiful and surprising.

One of the first things we did in the studio was to shoot a photogravure of a needlepoint canvas, a work in progress of mine. The translation of colors and textures of the wool into a black and white etching distanced this domestic handiwork, making it a mysterious abstraction. The nature of the original object, the needlepoint, is transformed. The only evidence that the object is a needlepoint comes from the body of the wool, the softness of the canvas and the delicate tiny hairs of the wool are evident at closer look. There is an uncanny contradiction, softening of what might seem like an austere grid. The color and pattern, expressed in the wool, is gone. The decorative and domestic hobby of needlepoints become dignified and mysterious through the venerated labor tradition of etching.

Under Paul's guidance, I experimented with making additional spit-bite plates to complicate the photogravures, but often found that the simple directness was the most powerful. These spit-bite plates, light atmospheric brushy looking ink- became the starting point for two drypoint etchings, Bottle Range and Essex Party, where I use the basic beer bottle) which occurs often in my work) as the basis of a still life and a landscape.

Portland, OR - Mullooney Printing is pleased to announce the release of ten new etchings by Jessica Jackson Hutchins.

These works emerged from Hutchin's residency in Fall of 2023, alongside collaborating Master Printer Paul Mullooney and Printers Harry Schneider, Cassie Ferguson and Erin Moore. Hutchins joined us as part of the Hallie Ford Fellows Residency Program. We are deeply grateful to The Ford Family Foundation for providing the funding to make these works possible!

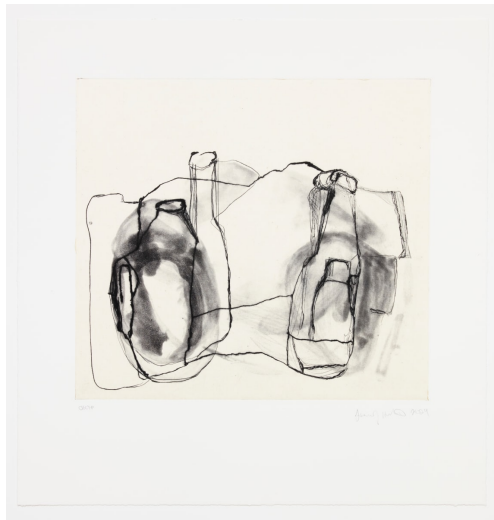
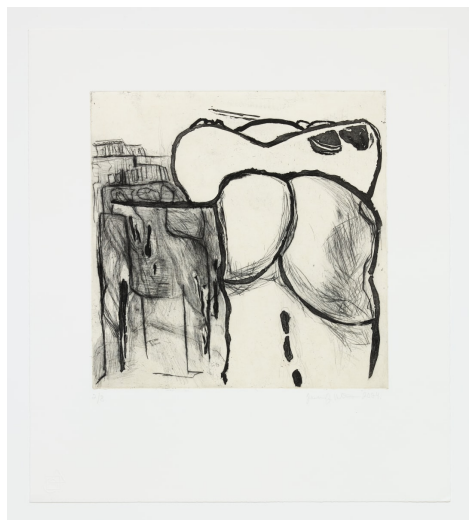
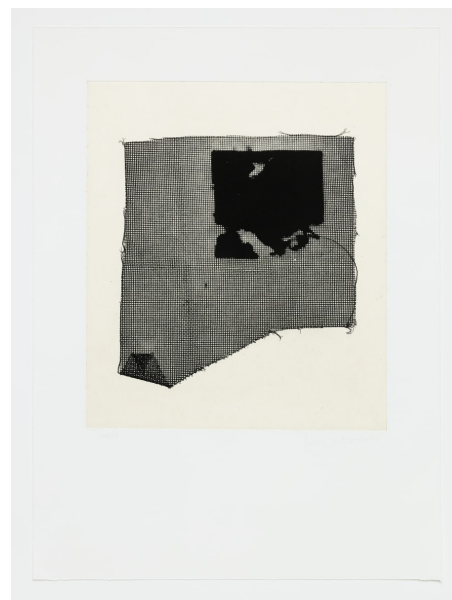
During her first collaboration at Mullooney Printing, Hutchins completed seven photogravure etchings, a continuation of needlepoint canvas pieces she was working on at the time. Adjacent to these, Hutchins worked on copper plates using a combination of etching techniques, including drypoint, hard ground, spit bite, aquatint and sugar-lift, to create a variety of line and surface textures. Images of bodies, objects and space accompany the translations of colorful needlepoint canvases into black and white abstractions.

All ten new editions are available for purchase on our [website](https://www.mullooneyprinting.com) or email Ella Marra-Ketelaar at ella@mullooneyprinting.com.



Jessica Jackson Hutchins, "Mouse and Peach". Direct copperplate gravure etching. Gampi chine-collé on Somerset 300g cotton rag. Image size: 19 x 18 in. Paper size: 24.5 x 22in. Edition of 8. 2024. \$800.

JESSICA JACKSON HUTCHINS NEW RELEASES



Jessica Jackson Hutchins (clockwise)

"Fugitive Head". Direct copperplate gravure etching. Gampi chine-collé on Somerset 300g cotton rag. Image size: 10.75 x 9 in. Paper size: 17.25 x 14 in. Edition of 8. 2024. \$800

"Pop". Direct copper-plate gravure etching. Gampi chine-collé on Somerset 300g cotton rag. Image size: 12.5 x 8.25 in. Paper size: 17.5 x 12 in. 2024. \$800

"Finale". Direct copper-plate gravure etching. Gampi chine-collé on Somerset 300g cotton rag. Image size: 14 x 12 in. Paper Size: 22 x 16 in. 2024. \$800

"Bottle Range". Spit bite aquatint etching with drypoint. Gampi chine-collé on Somerset 300g cotton rag. Image size: 14 x 12 in. Paper size: 20 x 17 in. Edition of 8. 2024. \$800

"Record Collection". Sugarlift aquatint with drypoint. Gampi chine-collé on Somerset 300g cotton rag. Image size 12 x 11.75 in. Paper size: 19 x 17 in. 2024. \$800

ARTIST BIO

Jessica Jackson Hutchins (b. 1971 in Chicago, Illinois) produces sculptural installations, assemblages, paintings, and large-scale ceramics that often transform everyday household objects. She has recently had solo exhibitions at Columbus College of Art and Design in Columbus, OH (2016); the Aldrich Contemporary Art Museum (2014); the Hepworth Wakefield Museum (2013); the Broad Art Museum in East Lansing, MI (2013); and the Institute of Contemporary Art in Boston, MA (2011). Significant group exhibitions include *Makeshift* at the John Michael Kohler Arts Center, where Hutchins first premiered her performance work; the 55th Venice Biennale, The Encyclopedic Palace (2013); and The Whitney Biennial (2010). Her work has been incorporated into public collections, including the Museum of Modern Art, New York; the San Francisco Museum of Modern Art, San Francisco; the Museum of Contemporary Art, Chicago; the Brooklyn Museum, New York; the Hammer Museum, Los Angeles; the Margulies Collection, Miami; and the Portland Art Museum, Portland. Hutchins holds a BA in Art History from Oberlin College and an MFA from the School of the Art Institute of Chicago. She lives and works in Portland, Oregon.